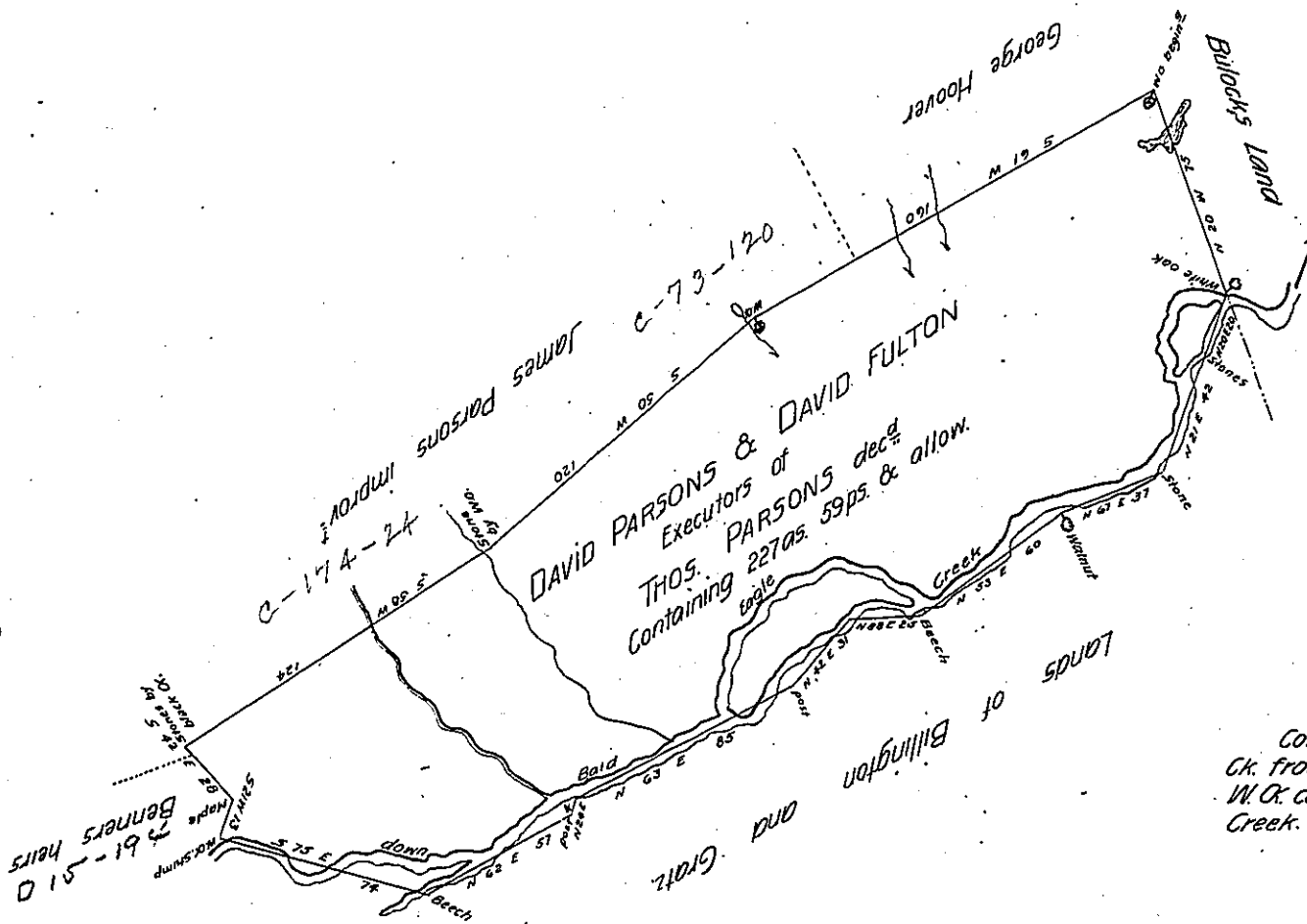


D-15-250



D-15-210

Courses & distances down the  
Ck. from the W.O. Stump to the  
W.O. corner on the bank of the  
Creek. Viz:-

S	75	E	74	per <sup>s</sup>
N	62	E	57	"
N	24	E	04	"
N	63	E	85	"
N	42	E	31	"
N	88	E	25	"
N	53	E	60	"
N	67	E	37	"
N	21	E	42	"
N	20	E	20	"

down the Creek 435 per<sup>s</sup>

*draft of a Tract of Land in Boggs Township Called Walnut Bottom Surveyed the 12<sup>th</sup> day of August 1837 in pursu-  
ance of a Warrant dated 10<sup>th</sup> day July 1837 granted to David Parsons & David Fulton Executors of Thomas Parsons deceased Con-  
taining Two Hundred, twenty seven <sup>acres</sup> ~~perches~~ and fifty nine perches, and allowance of six per. ct for Roads &c.*

*Jr<sup>o</sup> Taylor Esq  
Sur. G<sup>t</sup>*

*Jos. F. Quay  
Deputy Sur  
of Centre County*

IN TESTIMONY that the above is a copy of the original remaining on file in the Department of Internal Affairs of Pennsylvania, made conformably to an Act of Assembly approved the 16th day of February, 1833, I have hereunto set my Hand and caused the Seal of said Department to be affixed at Harrisburg, this

sixth day of December 1906

*Geo. P. Brown*  
Secretary of Internal Affairs.